

# **BC PRIMARY** **NEWSLETTER**

**FRIDAY 1 MARCH, 2019**

**Kia ora Parents & Caregivers,**

## **Student-Parent-Teacher Conferences**

In less than two weeks we have our **Student-Parent-Teacher Conferences**. These biannual meetings are part of our reporting process and are an opportunity for all stakeholders in your child's learning to spend time together. These meetings are designed to encourage both you and your child to meet with the teacher and discuss your child's growth as a learner. Your child's engagement in this conversation supports their development, enabling them to take some ownership and accountability for their progress and achievement.



This year each meeting time will be 15 minutes long. Bookings will be available online from Monday. An email will be sent to all families providing you with a link.

This week two of our syndicates have been holding team building days. Team Te Āka (the Ark) and Team Tē Teparā (The Stable) have held Bucket Day and Tent Day! The focus has been on being great team players and recognising the gifts that God has given each of us. All in all there has been loads of fun too!



Blessings,

**Marcus Norrish**  
Head of Primary



## **TERM 1 KEY DATES**

### **Student-Parent-Teacher Conferences**

Day 1 - Tuesday 12th March  
Day 2 - Thursday 14th March

### **Summer Sports Photos** Thursday 14th March

### **Teacher Only Day** Friday 22nd March (School Closed)

### **Swimming Sports** Year 5/6: Wed. 13th March North Cluster: Wed. 20th March WBOP: Wed. 10th April

### **House Challenge Day** Thursday 4th April (Parents Welcome!)

### **Mufti Day** Friday 5th April

### **Primary Easter Service** Wed. 10th April

@BCPrimary



### **Our Vision**

To be a Christian learning community of excellence where lives are transformed.



**CHALLENGING  
THE INTELLECTUAL**



**DEVELOPING  
THE CULTURAL**



**EXERCISING  
THE PHYSICAL**



**SHAPING  
THE MORAL**

# AROUND THE SCHOOL

## DEVELOPING THE BC LEARNER

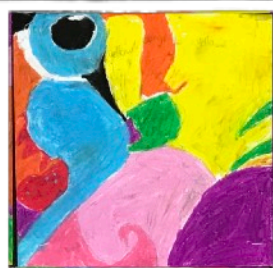
One of our BC Learner qualities is the 'Team Player'. As a school we recognise the Biblical view that all children are uniquely created by God. We also recognise that we are created to work, live and learn in community - as a body - and that each of us can and should contribute to that. As we

learn about being a Team Player, we want to support children in recognising and developing the unique attributes that God has given them and learn to use them in a way that serves others and honours God. Maybe you can talk more about this at home.



## E4 GETTING ARTY

As part of E4's inquiry about what it means to be a Team Player, they have created this wonderful piece of collaborate artwork. Each section was created by a different person. On it's own one piece has some colour, however altogether it creates a masterpiece.



## GARDEN CLUB

It is wonderful to see our Garden Club kicking off for the year.

This group has big dreams for the year and are looking forward to designing, growing, developing and nurturing a garden for the school. If you have any resources that could be useful for the team, or you'd like to join the group at lunchtime on Wednesdays, Mrs Drake would love to hear from you!



## CHESS CLUB?



Are you a passionate chess player and would love to grow a passion for the game in our students? We'd love to see a chess club start up in Term 2 and are looking for a parent volunteer to run a primary chess club one lunchtime a week. If you are interested in exploring this

opportunity, please email

[marcus.norrish@beth.school.nz](mailto:marcus.norrish@beth.school.nz)

## PTA MEETING

The PTA will be having its first meeting of the year on Wednesday 6th March at 6:00pm in the Function Room (admin block). We welcome you all to be part of the PTA.

Meetings go for approximately 1-½ hours.

If you have any questions, please email the PTA on: [pta@beth.school.nz](mailto:pta@beth.school.nz)

## SCHOLASTIC BOOK FAIR

In the last week of Term 1 we are hosting the Scholastic Book Fair in the Bethlehem College library. This will be a fantastic opportunity to access and purchase a large range of books that can support a reading culture at home. Watch out for more information over the next few weeks.



CHALLENGING  
THE INTELLECTUAL

DEVELOPING  
THE CULTURAL

EXERCISING  
THE PHYSICAL

SHAPING  
THE MORAL



# Kiwi Kids Club Bethlehem College



## We Provide:

Safe and caring environment for children to play, learn,  
have fun and make new friends.

## We Offer:

- ✓ After School Hours from 3pm to 6 pm
- ✓ Creative Activities and Educational Games
- ✓ Outdoor Activities and Free Play
- ✓ Highly Qualified and Experienced Staff
- ✓ Homework Club
- ✓ Rest Time and Movies
- ✓ Fruit and Snacks
- ✓ Lots of Love and Fun



## REGULAR AND CASUAL BOOKINGS AVAILABLE

RATES	REGULAR BOOKINGS*	CASUAL BOOKINGS
3PM – 4PM	\$ 11.00	\$ 12.00
3PM – 5PM	\$ 14.50	\$ 15.50
3PM – 6PM	\$ 18.00	\$ 19.00

Common Room Senior Section  
Contact: Pamela Silva  
Mobile: 022 190 5724  
Email: [kiwikidsc@gmail.com](mailto:kiwikidsc@gmail.com)  
Facebook Kiwi Kids Club

