



FRIDAY 15 MARCH, 2019

Kia ora Parents & Caregivers,

IMPORTANT - SCHOOL CLOSED

There are two key events coming up that parents need to be aware of. Please read carefully as we need you to respond to ensure the safety of all children.

Teacher Only Day - Friday 22nd March

The school will be closed all day - please keep children at home.

NZEI Paid Union Meeting (PUM) - Tuesday 26th March

Time: 1:30pm - 3:15pm.

The school is not technically closed during this time, however the majority of teachers are required to attend the union meeting. Therefore any children remaining at school will take part in a maintenance programme run by a skeleton staff.

We would appreciate it if you could support teachers by collecting your primary children from school either before lunchtime at 12:30pm or after lunch at 1:30pm. Buses will be running at normal times.

It is important that we ensure the safety of our students, so we ask that you confirm your intention to collect your children from school by completing this form. *Please note, a link to this form has already been sent out to families by email.*

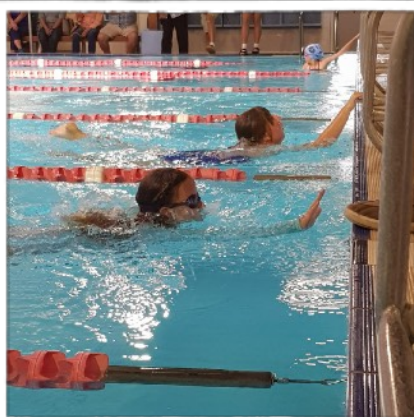
[CLICK HERE](#)

to complete the form

Your support and communication around this is appreciated.

Blessings,

Marcus Norrish
Head of Primary



Year 5/6 Swimming Sports



TERM 1 KEY DATES

Teacher Only Day

Friday 22nd March
(School Closed)

Swimming Sports

North Cluster: Wed. 20th March
WBOP: Wed. 10th April

NZEI Paid Union Meeting

Tuesday 26th March
1:30pm - 3:15pm

House Challenge Day

Thursday 4th April
(Parents Welcome!)

Mufti Day

Friday 5th April

Primary Easter Service

Wednesday 10th April
1:30pm

@BCPrimary



Our Vision

To be a Christian learning community of excellence where lives are transformed.



**CHALLENGING
THE INTELLECTUAL**



**DEVELOPING
THE CULTURAL**



**EXERCISING
THE PHYSICAL**

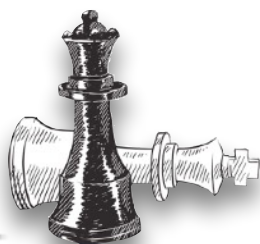


**SHAPING
THE MORAL**

AROUND THE SCHOOL

CHECKMATE!

Congratulations to Matthew Kim who recently competed at the BoP Rapid Junior Chess Tournament, placing first in the U10 age group. This is a fantastic achievement, and one we are proud of.



TEACHER ONLY DAY OPTIONS!

There is no school on Friday 22nd March due to Teacher Only Day. If you are looking for something fun for the kids and a way of burning off some energy, Flip Out Tauranga are offering reduced rates to BC families on this day.

Due to Flip Out also being mid-way through renovations the entry cost is extra special. Tell them you are from BC Primary for these great deals.

\$5.00 - 1 hour jump time
\$8.00 - 2 hour jump time



TE MAUNGA SWIMMING SPORTS

Our Year 5/6 team (Te Maunga) had a fantastic day of swimming this week at the Greerton Pools. Congratulations to all those who placed on the day. Those who qualified will now go on to compete at the North Cluster Event in Katikati next week.



CHANGE OF PLANS?

Do you sometimes just have 'one of those days?' You get the kids off to school, and then realise that everything is different and there needs to be a change of plans! From time to time stuff happens....so you may need to get a message through to your child for the end of day. If you need to do this, please call the office before 12:30pm. Calls after this time can be more difficult to get through to students in a timely manner. Emailing teachers is not recommended as emails are not always checked.

BUS RULES

A significant number of our buses are funded by the Ministry of Education (MoE). It is important to know that only children registered for a bus are permitted to use it. Buses cannot be used to travel to a friends for a 'play-date' or to go to grandparents etc. Most buses are very full, so children not following these rules, put others at risk.

SIGNING IN / SIGNING OUT

We take the safety of our children very seriously at Bethlehem College. When children arrive to school late, or leave early they must register at the primary office.

ARRIVING LATE: When arriving after 8:45am
LEAVING EARLY: Departing before 3:00pm

If leaving early children must go to the office with their parent to be released. Please talk directly with the receptionist who will record your departure. Please don't use the tablet in the office - this is for visitors to the school - not primary students.

SCHOLASTIC BOOK FAIR

In the last week of Term 1 we are hosting the Scholastic Book Fair in the Bethlehem College library. This will be a fantastic opportunity to access and purchase a large range of books that can support a reading culture at home. Watch out for more information over the next few weeks.



 CHALLENGING
THE INTELLECTUAL

 DEVELOPING
THE CULTURAL

 EXERCISING
THE PHYSICAL

 SHAPING
THE MORAL



GIVE IT A GO

BASKETBALL AND HOCKEY LUNCHTIME SESSIONS

BASKETBALL

- Monday 11 March – Year 5 & 6
- Monday 18 March – Year 3 & 4

These sessions will be in the bus bay.

HOCKEY

- Wednesday 13 March – Year 1 - 4
- Tuesday 19 March – Year 5 & 6

These sessions will be on the netball courts.

Please bring your lunch, shoes and hat.



**BETHLEHEM
COLLEGE**

EXCELLENCE
through CHRIST

Kiwi Kids Club Bethlehem College



We Provide:

Safe and caring environment for children to play, learn,
have fun and make new friends.

We Offer:

- ✓ After School Hours from 3pm to 6 pm
- ✓ Creative Activities and Educational Games
- ✓ Outdoor Activities and Free Play
- ✓ Highly Qualified and Experienced Staff
- ✓ Homework Club
- ✓ Rest Time and Movies
- ✓ Fruit and Snacks
- ✓ Lots of Love and Fun



REGULAR AND CASUAL BOOKINGS AVAILABLE

RATES	REGULAR BOOKINGS*	CASUAL BOOKINGS
3PM – 4PM	\$ 11.00	\$ 12.00
3PM – 5PM	\$ 14.50	\$ 15.50
3PM – 6PM	\$ 18.00	\$ 19.00

Common Room Senior Section
Contact: Pamela Silva
Mobile: 022 190 5724
Email: kiwikidsc@gmail.com
Facebook Kiwi Kids Club

