



## HEAD OF SCHOOL LETTER WEEK 8 TERM 2

Kia ora wonderful BC Chapman whānau,

“When I consider your heavens, the work of your fingers, the moon and the stars, which you have set in place, what is mankind that you are mindful of them, human beings that you care for them? Lord, our God, how majestic is your name in all the earth!” Psalm 8:3-4/9.

How many times have you & I gazed up at the stars & felt such a sense of awe & wonder? At Camp in April this year with our Year 7 & 8 rangatahi we boarded a barge at Finlay Park Camp & journeyed down through a narrow rocky river passage to view the splendour of the night sky. Gazing into that vast array of twinkling lights it was impossible not to feel a deep sense of ‘awe & wonder’. No one uttered a word.

Now with the arrival of Matariki as a National holiday here in Aotearoa we are able to explore what this means & why it holds such cultural significance. In looking at this family of stars, we can reflect on what it means to truly be community functioning together. Two beautiful expressions of this are found in Te Reo Māori ‘Matariki ahunga nui’- Matariki brings us together & ‘Matariki whiria te tangata’ - Matariki weave the people together.

It is also a precious time to pause, to reflect, to consider. We can reflect on the past year remember & honour those who we loved & have passed, we can recall our achievements & challenges, celebrate the present & begin to plan for the coming year. It is a wonderful opportunity to learn an entire way of thinking & learning, preserving knowledge related to history, values & agriculture. This happens through stories which are connected to the stars & were well known within Māori iwi. In different Iwi the dates of the celebration differ sometimes for a week, & for others sometimes a month. The central thread is a celebration of the new year by looking backwards with gratitude, remembering those who have gone before, gathering together in the present with those we love & treasure, & looking forward & planning with hope for the future. So, let’s not miss this opportunity as a nation.

Me te aroha tonu  
With love always

Hazel



So Jesus said to the Jews who had believed him, “If you abide in my word, you are truly my disciples, and you will know the truth, and the truth will set you free.”

**John 8:31–32**

Me i reira ka mea a Īhu ki ngā Hūrai i whakapono ki a ia, “Ki te mau tonu koutou ki tāku kupu, he tino ākongā koutou nāku: ā, e mātua koutou ki te pono, mā te pono anō koutou ka rangatira ai.”

**Hoani 8:31-32**

And we know that the Son of God has come and has given us understanding, so that we may know him who is true; and we are in him who is true, in his Son Jesus Christ. He is the true God and eternal life.

**1 John 5:20**

Nā, e mātau ana anō tātou kua tae mai te Tama a te Atua, kua hōmai e ia ki a tatou he mātauranga, kia mōhio ai tātou ki a ia, ki te mea pono; kei roto anō hoki tatou i a ia, il te mea pono, arā i tāna Tama, i a Īhu Karati. Ko te Atua pono tēnei, ko te ora tonu.

**1Hoani 5:20**



We teach our tamariki to remember in their friendships & in our kura that, 'There's always room for one more'. We simply need to move over & create that place, for another person to join us. Our New Entrant/Year 1 tamariki do this throughout the entire year. They are constantly accommodating another new child. This photo "Making Room for More", shows four of our ruma wha tama/boys preparing to welcome the next two boys who have joined this week and will join at the beginning of Term 3.

### Making Room for more



"Look, Whaea Del! We've made tents, and we've made some for our new friends who are coming soon."  
(-Fe'ofa'aki and Micah)

## PRAYER MEETING

For several years we have had the joy of a Parent Prayer Meeting on Tuesday mornings between 8am & 8.30am. **Liz Goodgame** led this group for us over the past two years & prior to that, **Whaea Anelda**. It has always been a powerful support for us as staff & as a kura community. Prayer is where we can truly engage in praising God for His faithfulness, seek His guidance, bring our requests with thankful hearts, as we recognise our total dependence on Him. It's where we see God move on our behalf.

Our kura history is the story of God's goodness & His miraculous provision over the past 15 years. **Astrid Read** is going to lead this group which will meet together in the 'Health Room'. **The Tuesday Prayer Meeting will begin again on Tuesday 15<sup>th</sup> July (first day back in Term 3) & be held weekly between 8am & 8.30am.** If you can spare 10 minutes after dropping off your child/children then please pop in to pray.

## WAKA TAUTOKO/PTA AGM MEETING

We are holding our AGM on Thursday evening 17<sup>th</sup> July (Week 1 Term 3) at **Sarah Moffatt's home at 83 Lytton Street between 6pm & 8pm**. This meeting involves **Dessert, Coffee & GREAT community camaraderie!** So pop the date in your calendar right now. We have some important decisions to make going forward & some significant people to honour & thank! Bring your fresh ideas, creativity, & let's launch the remainder of the year with vision & commitment. After all we have the **BEST 'Waka Tautoko'** PTA Chapman in the world & we aren't biased, no not one little bit!

### PARENT SURVEY CLOSING MONDAY 23<sup>rd</sup> June at 9am

If you could please set aside 10-15 minutes this weekend to complete a parent survey (Primary, Secondary, Chapman), we would be **most grateful!** **THE SURVEY CLOSING ON MONDAY 23 JUNE AT 9 AM.**





# WAIPA MUSIC FESTIVAL

On Tuesday 17<sup>th</sup> June, we were able to send some of our extremely talented singers & musicians to the Kahui Ako Music Festival held at Waipa kura in Te Awamutu. Alongside other rangatahi/young people from nine other faith-based kura from across Waikato & the Bay of Plenty, their God-given talents in The Performing Arts were able to be showcased & celebrated. A truly wonderful occasion! Special thanks to **Jannine and Jon Parker, Ana Paletu'a and Matua Lama** who transported our tamariki



## BC CHAPMAN CROSS COUNTRY

Plan A & Plan B for our Cross Country at Waipa was well organised & we were lined up ready to go! Alas, neither of the Fridays chosen worked due to the persistent wet weather. So then we came up with Plan C! Where could be better than our own field where we could run on the same course we've been practising on for the past six weeks? Thursday 19<sup>th</sup> June, was the date set, & our excited runners lined up to complete the distance & end it with a smile! Their success, achievement, House points, sausages, chocolate & ice-creams made it all worthwhile! Hopefully 2026, will see us back at Waipa & on the forest tracks!



More photos to come in the next newsletter





# INTER-KURA CROSS COUNTRY AT KAHAROA

While the weather for our BC Chapman Cross Country has been uncooperative, **Monday 16<sup>th</sup> June** dawned with weather that was conducive to running the event..... Bonus...NO rain! We made our way to Kaharoa with 23 runners, some of whom had only just recovered from the flu virus. Many thanks to our whānau who consistently enable us to cover transport to & from events. Our athletes ran with determination & tenacity cheered along by enthusiastic BCC spectators every step of the way. As always, we might not be the largest team but we don't lack enthusiasm!

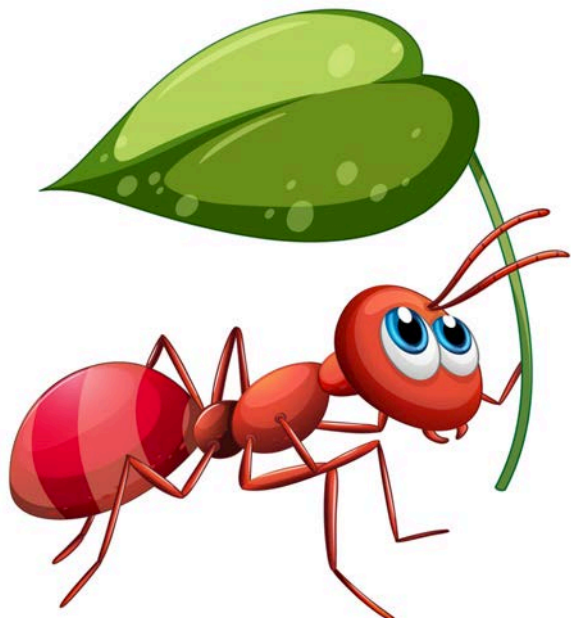


This was the first time our new Rep tops designed by **Matua Rio Maxwell-Crawford** were worn. They are just stunning & carry several symbols which are connected to who we are & what we believe. It's entirely possible they ran faster as the new shirts were received with real joy & enthusiasm. We are incredibly proud of the commitment our runners showed & their resulting placings! These four young people qualified for the BOP Regional Cross Country; **Mikaela Christensen, Raine Parker, Jeffery Pan, Nathan Oliver**. Congratulations everyone. Just fantastic!





# ANTSHILLVANIA-OUR KURA PRODUCTION



As we rapidly approach the holidays, we'd ask that you do **check that your son/daughter has a black round or polo neck skivvy & black leggings as this is the base for all costumes.** Once the beginning of September comes these become impossible to buy. KMart & the Warehouse are good options if you need to buy these items.

Next Term we will be launching into practices for our Kura Production. If you are interested in assisting in any way can you **please let Mrs Warnes or Mrs Stevenson know** as we really need people for different aspects. Sewing hoods, making props, make up, baking, & a myriad of other things are needed. If anyone can spare an hour or two to help sort through our existing costumes, that'd be such a help as we can then determine what we already have & what else we will need.

## REPORTS

Your son/daughter's Report will be sent to you digitally on **Friday 27<sup>th</sup> June.** A 'hard copy' will also be sent home, please collect these from the school office at 3pm. Our kaiako have written these over several weeks. It is a privilege to partner with you in your child's/children's educational journey. We trust their Report is an encouragement to them & to you as you celebrate their growth together. We look forward to the next two terms of exciting holistic learning.

## Writer's Corner

### Autumn Poems (Ruma ono)

#### Autumn

by Talia Read

Autumn looks like grand orange and pink skies  
from sunrises and sunsets  
And sounds like horrendous thunder outside,  
while I'm warm and cozy in bed  
It smells like crunchy, warm toast  
being shoved onto small white plates  
And tastes like maple syrup and chocolate drops  
being sprinkled into my fresh bowl of oats  
Autumn feels colourful and shivery,  
as more and more crisp leaves change into  
beautiful colours,  
and then melt away from the bare trees  
Autumn is a bright, cold and magnificent season,  
and gives us joy and gratitude

#### Autumn

by Abigail van der Merwe

Autumn looks like lively, dreamy golden leaves  
relentlessly crunching when you step  
And sounds like the whistling wind knocking the leaves  
off the tree in great despair  
It smells like delicious BBQ spices coating the juicy  
steak before it's put on the dreadfully hot coals  
And tastes like fresh cinnamon and whipped cream  
pancakes with hot chocolate with marshmallows  
for breakfast.  
Autumn feels like numb fingers with a side of cold  
breezes, whipping winds and don't forget the shivering  
nights of blankets on top of blankets.  
Autumn is an explosion of colour, an unforgettable  
symbol of a brand-new season.

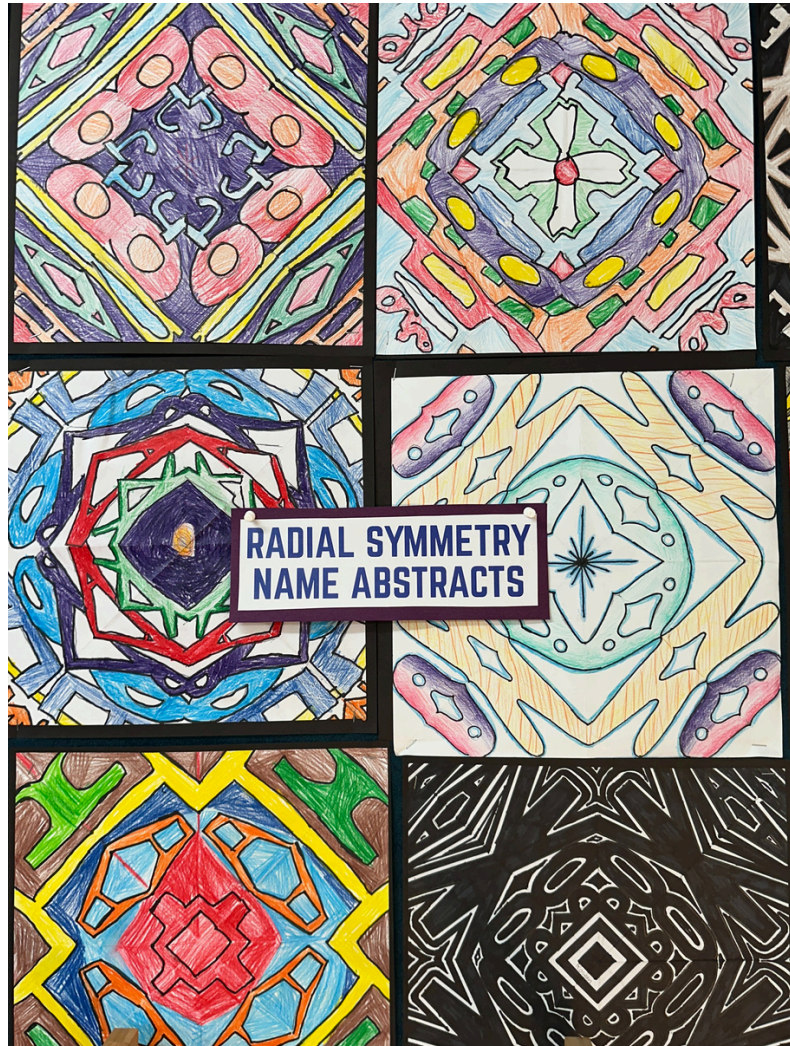


# ART EXHIBITION

Radial Symmetry Art by Year 7&8 tamariki



Look what we made  
in Woodwork!

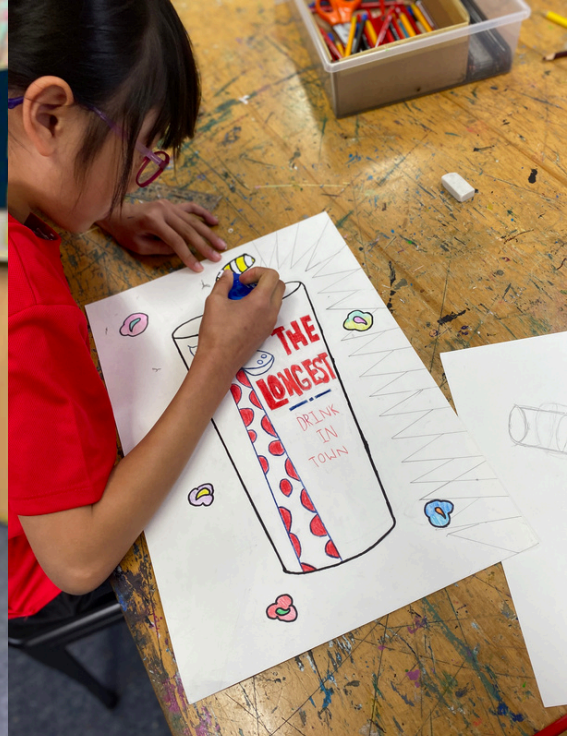




# WINTER ART BY YEAR 5/6









# UP & COMING DATES

Friday 20<sup>th</sup> June Mataariki Holiday

**Friday 27<sup>th</sup> June Last day of Term 2**

**(Reports in school office for collection at 3pm)**

Monday 14<sup>th</sup> July Kaimahi/Staff Only Day

**Monday 14<sup>th</sup> July – Uniform shop NOT open**

Tuesday 15<sup>th</sup> July Term 3 begins

**Tuesday 15<sup>th</sup> July Prayer Meeting (8am-8.30am)**

Thursday 17<sup>th</sup> July Pōhiri/Powhiri to welcome new whānau

**Thursday 17<sup>th</sup> July 'Waka Tautoko' PTA AGM Meeting  
6pm-8pm at 83 Lytton St**

*'ECB Cleaning &  
Gardening  
Services*

Contact Elise:  
0220706538

References  
Available.  
Competitive  
Rates.



**Foster Families  
Urgently Needed**



*Do you want to make a real  
difference in the life of a child?*

We are looking for caring Christian people  
who are willing to open up their heart and home  
to care for a child or young person.

A weekend, a week, or sometimes longer.

Find out more about this exciting ministry  
**YOU CAN MAKE A DIFFERENCE**

For an application pack or further details, please contact:  
our Foster Parent Recruiter, Venetia Ryan  
027 263 4549 or Venetia.Ryan@ohf.org.nz



[www.ohf.org.nz](http://www.ohf.org.nz)

A Christian Community Response



*W.ild*

**W.ILD CONTRACTING  
SERVICES – WAYNE  
GOODCHILD.**

From stacking your firewood or water-  
blasting the deck to creating beautiful  
wood turned gifts or restoring that  
antique tool you got from your  
grandpa, W.ild can help you out.  
Ph 027 332 2961

[www.facebook.com/Wild-  
Contracting-Services](https://www.facebook.com/Wild-Contracting-Services)

# BCC WHANAU BUSINESSES

Please get in touch if you'd like  
your business included

**CANTON  
RESTAURANT AND  
TAKEAWAYS**

**WESTEND SHOPPING  
CENTRE, Malfroy Rd.  
PH 07-347 8359**



DAVE & STACEY LONGBOTTOM. House wiring,  
electrical installations, and maintenance.

[www.longbottomelectrical.co.nz](http://www.longbottomelectrical.co.nz)

*Kara*  
**NILES**

Your local real estate salesperson!  
For results that move you email OR call

**Kara:** 021 025 97042  
[Kara@isellproperty.co.nz](mailto:Kara@isellproperty.co.nz)



**iSellProperty.co.nz**



**JUNIPER**  
49A LAKE ROAD, OHINEMUTU, ROTORUA



**INDOOR PLANTS, ART  
+ BEAUTIFUL THINGS**

**f** **@**  
[@juniper.store](https://www.instagram.com/juniper.store)

[hello@juniperstore.co.nz](mailto:hello@juniperstore.co.nz)

10-5 TUES-FRI  
10-2 SAT