

# Secondary Newsletter

TERM 2 | 2025  
ISSUE 4

**Tēnā koutou whānau, parents and caregivers,**

As we come to the end of a short but full term, I want to extend my sincere thanks to every family for your continued partnership and encouragement. Our students have embraced a range of learning, service, and cultural opportunities this term: from Worship Week to CAAs, sports camps to musical celebrations. What a joy it is to see them grow in confidence, character and community.

To our teaching and support staff: thank you. Your steady commitment to the holistic growth of our students — their minds, hearts, and spirits — is deeply appreciated. Your work behind the scenes often goes unseen, but it forms the foundation of the flourishing we witness each day.

As we mark Matariki and celebrate Haka across the school, we're reminded of the strength found in unity. In the spirit of the Māori proverb, 'He waka eke noa' which means 'We are all in this together'. We give thanks for the shared journey we're on as a learning community.

May the upcoming break be a time of refreshment, reconnection and rest. As Scripture reminds us: 'How good and pleasant it is when God's people live together in unity' (Psalm 133:1).

**Ngā manaakitanga,**  
Christopher Niles  
Head of Secondary

## Congratulations Haka Comp Winners: HUDSON-TAYLOR!



## FAITH

In C.S Lewis' '*Chronicles of Narnia*', Susan has heard of Aslan but never met him and wants to know more. She asks Mr Beaver what he is like – imagining Aslan to be a man. Aslan is in fact a lion. Susan is frightened but she likes the idea of meeting a Lion so asks, "Is Aslan safe"? Mr Beaver replies, "Of course he isn't safe, but he is good". That scene helps us to understand something about God's character, which Aslan represents. God is a safe refuge, a heavenly father who kindly looks after us. God is Holy and powerful and good; but like Aslan, he is not tame or predictable. He is powerful and majestic, beyond our full understanding, yet his actions are always rooted in goodness and justice. Like Aslan he calls characters to courage, sacrifice, and transformation, sometimes through difficult trials.

## KEY DATES

**Matariki Holiday – NO SCHOOL**  
20 Jun

**School Holidays**  
28 Jun – 14 Jul

**First Day Term 3**  
15 Jul

**NCEA Parent Info Evening**  
16 Jul 5.30 pm (PAC)

**Founders Day**  
18 Jul

**Chapel Open: Prayer & Worship**  
Mondays 8 – 9 am

## QUICK LINKS

[ENROLLED FAMILIES](#)

[SCHOOLBRIDGE](#) | [BC CALENDAR](#)

[STUDENT DAILY NOTICES](#)

## CONNECT WITH BC



*'Come to me all who labour and are heavy laden and I will give you rest'*  
(Matthew 11:28).





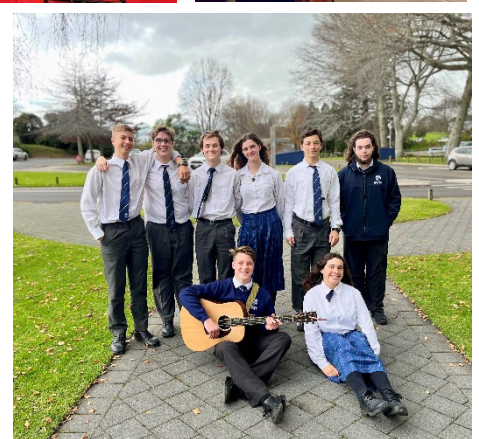
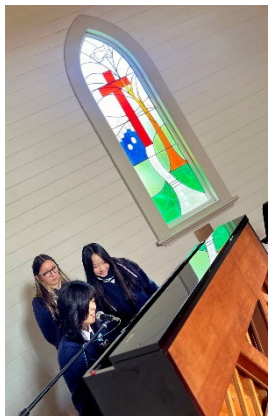
BETHLEHEM  
COLLEGE

EXCELLENCE  
through CHRIST

## 40 Hour Challenge

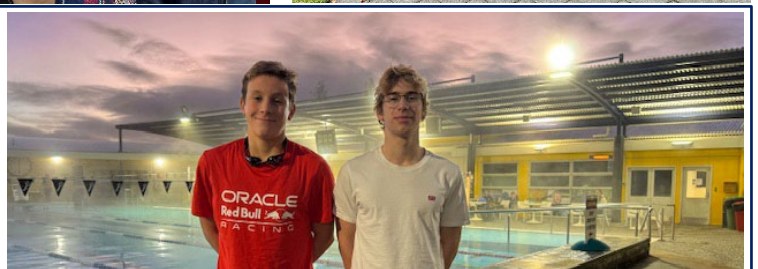
### WORSHIP WEEK

It was a wonderful week at the Chapel completing 40 hours of worship while fundraising over \$30K for World Vision's 40 Hour Challenge. There were over 50 spots filled with the youngest in Kindy to our beloved Founder Graham Preston. Thank you to the many classrooms for your fabulous programmes, students for filling the chapel with praise and parents for your loving support.



### TEAM BC

Well done to Luke Houghton and Connor Miller for swimming 40KM and raising \$3,000 dollars for the 40 Hour Challenge! They started their challenge at 7am Saturday and finished mid-afternoon on Sunday. Congratulations on this feat during winter!



*Our Vision: To be a Christian learning community of excellence where lives are transformed.*





BETHLEHEM  
COLLEGE

EXCELLENCE  
through CHRIST

## JOAN OF ARC PRODUCTION

### DRAMA

'Joan of Arc', directed by students Emily Todd and Ana Phillips, will be performed in the PAC at 7pm Wed 30 July, Thu 31 July and Fri 1 August. Tickets will be \$5 students and \$10 adults, sold at the door or at school. Details to follow.

'Hold the cross high so I may see it through the flames'. These are the last words spoken by Joan of Arc, a French peasant girl who showed boundless faith and unfaltering courage. Her faith gave her a mission. Her King gave her a command. Her country became her army. Joan of Arc was burnt at the stake aged 19. She bled for her country and died for her faith.



## INTERNATIONAL

It's a busy time in the International Department right now! Our students have been enjoying some fantastic experiences. They visited Mitai in Rotorua for an incredible cultural evening, complete with a traditional hangi dinner. They also had the chance to go horse riding through a local forest. Just last Friday, we held an early Matariki dinner at Nautilus to celebrate the Māori New Year and to farewell the students who will be leaving at the end of the term. The all-you-can-eat buffet was a big hit — they absolutely loved it!



*Our Vision: To be a Christian learning community of excellence where lives are transformed.*





BETHLEHEM  
COLLEGE

EXCELLENCE  
through CHRIST

## MISSIONS

### YEAR 10 RUATORIA

During Week 7, a group of Year 10 students journeyed to Ruatoria to serve and learn. They visited a hospital to sing, share and spend time with the elderly, distributed firewood and kai/food, presented a dental programme to the local kaupapa Māori Primary school, walked up Mt Hikurangi, learnt the rich history of the Ngati Porou and how Christianity was introduced and spread through the area, oversaw an open air sausage sizzle in the community playground and more. God's fingerprints were everywhere. Often the reflections of the day and the daily devotions given by students were highlights and deeply encouraged our faith in Jesus. The Baker whanau at Hiruharama marae were our amazing hosts. What a blessing to serve!



### TUAKANA/TEINA VISIT TO TE KURA O MANUNUI

Last week, the Senior Te Reo Māori class went to visit students from the Rumaki (full immersion Māori) class at Te Kura o Manunui. It was a very inspiring time of kōrero, kēmu and pānui (talking, games and reading). Our students listened to the children reading their pukapuka and then played literacy games with them. A huge thank you to Whaea Kirsty and Matua Caiden for welcoming us.



*Our Vision: To be a Christian learning community of excellence where lives are transformed.*



## SPORTS

### YEAR 7 & 8 SPORTS CAMP: A CELEBRATION OF SPORTSMANSHIP AND SUCCESS

Last week, two teams of enthusiastic Year 7 and 8 students took part in an unforgettable Sports Camp, where they proudly represented Bethlehem College in a variety of sporting competitions. Held over five days, the camp brought together schools from across the region, creating an exciting and competitive atmosphere. From the moment they arrived, our students displayed exceptional sportsmanship, encouraged each other and formed new friendships. Whether on the field, court, or track, they showed courage, respect and integrity.

Each day was packed with activities, including football, netball, hockey, basketball, athletics, rugby etc. Despite the tough competition and challenging circumstances (including the weather) our students rose to the occasion. Their determination and teamwork were clear for all to see, and Bethlehem College came away with quite a few first place trophies! Off the field, our students continued to shine. They took care of their teammates, respected the camp rules, and made sure to include everyone — whether it was during meals, team talks, or evening activities. On Thursday evening, the students rose together in unity to complete the school cheer including a powerful haka. We are incredibly proud of their efforts and achievements. In addition, a special thanks to the teachers, parent helpers and Year 9 & 11 student helpers for your unwavering commitment, care and support during the week, helping to make it a success!



### NETBALL

Congratulations to the BC Year 8 Diamonds team who won the "Show Us Your Magic" competition run by the Waikato BOP Magic professional netball team. They submitted a video entry detailing what netball (and the Magic Team) means to them, their before and after game chant, their dedication through umpiring, and their game play and team spirit. They won tickets to the Magic game in Hamilton this Saturday, some Magic merch and a training session with Magic player, Oceane Maihi, next term.

Team: Chante Bester, Sandra de Laborde, Alani Hartley, Debbie Healy, Sofia Huamash, Pippa Keam, Violet Milgate, Sofia Sanders, Grace Wallace. Coached by Rachel and Charlotte Hartley, managed by Katie Milgate.





## MUSIC

### WINTER WARM-UP CONCERT

Congratulations to the Music Department and all the student performers on an excellent concert on Monday night! The audience was treated to a highly entertaining evening of performances from our larger ensembles and choirs. The musicianship on display was outstanding and a testament to all the hard work put in by our students and teachers. A big thank you to our Hospitality Department for treating us to some delicious winter puddings and drinks, and thank you to all who came to support our students!



### BC ROCK BAND 'GO GETTER' WINS ROCKQUEST BOP REGIONAL FINAL

Congratulations to BC students Connor Cummins, Isaac Reid, Israel Cameron and Tre O'Sullivan of 'Go Getter' for winning the Smokefree Rockquest BOP Regional Finals on Friday 13th June. They brought their A-game and delivered a standout performance!

Their win earned them a generous stash of Rockshop vouchers, along with the exciting opportunity to submit a video application for the Smokefree Rockquest National Finals. To do this, the band recorded a live set on Tuesday at Curate Church.

The National Finals take place in September with the top 10 video submissions from across the country. All the best boys!



## Y10-12 SUBJECTS & NCEA

### Y10-12 SUBJECT SELECTION 2026

Subject Selection will officially open on **Tuesday 15th July** and close on **Friday 25th July**. All updated **2026** course information can be found in SchoolBridge from **Thursday 19th June**, and selections will be made through this platform. Detailed instructions on how to use SchoolBridge for subject selection will be provided at the **start of Term 3**, ensuring all students are confident in navigating the process.

To support informed decision-making, students in **Years 10 to 12** are invited to attend a **Subject Information Session** on **Wednesday 16 July at lunchtime, in HE1 and HE2**. This is a valuable opportunity to meet with Heads of Departments (HODs) and Teachers in Charge (TICs) to discuss course pathways, subject content, and specific entry requirements.

We strongly encourage students to begin conversations at home about potential subject choices and future pathways. These discussions are an important part of the decision-making process and help ensure alignment with students' interests, strengths, and career aspirations. Students are also encouraged to explore the **Bethlehem College Careers Hub** (link below). This platform offers a wealth of resources, including career and pathway information, tertiary guidance, and tools to help students make well-informed subject choices. <https://beth.careerwise.school/>

If further support is needed, students can make an appointment with our **Careers Department** or speak directly with their **Dean**. Let's work together to ensure every student is equipped and confident to make the best choices for their future learning journey.



### Y10-12 NCEA PARENT/STUDENT INFO EVENING – Wed 16 July

Bethlehem College warmly invites all **Year 10 to Year 12 students**, along with their parents and guardians, to attend our annual NCEA Information Evening on **Wednesday 16 July**.

This important event will provide students and families with a better understanding of the NCEA qualification and how it is implemented at our college. It will provide the latest updates on NCEA assessment processes, directly informed by NZQA guidelines. This evening is also designed to support students as they begin making subject selections for 2026.

The evening will be led by:

**Mr Chris Niles** – Head of Secondary  
**Mrs Emma Talbot** – Assistant Head of Secondary (Teaching and Learning)  
**Mrs Miriam McFarlane** – NZQA Principal's Nominee  
**Mrs Anna Exelby** – Head of Careers Department

The presentation will begin at **5:30pm in the Bethlehem College Performing Arts Centre**. Following the session, staff will be available in the foyer to answer any questions you, or your child may have. We look forward to seeing you there.





## GENERAL NOTICES

### PARENT SURVEY CLOSES MONDAY

If you could please set aside 10-15 minutes this weekend to complete a parent survey ([Secondary](#)), we would be most grateful! The survey closes on **Monday 23 June at 9 am**.

### PARENTING IN AN ONLINE WORLD WITH ROB COPE

Monday 11 August: 2 sessions 3.30 and 6.30 pm. As part of the Bethlehem College community, it is strongly recommended that at least one parent from each family (preferably both) of Y0-13 students attend to help us navigate this issue together as a community. This is a 2 hour presentation for adults only. Tickets are \$10 each (+ fee) [here](#).

### VOTE BC FOR LOCAL LEGENDS

BC submitted an application to Tauranga Crossing's [Local Legends](#) for the project 'Let's Paint Te Wairoa Marae!' and has been selected as a finalist! Please show your school spirit by casting your vote [here](#) daily between 1 – 30 June and sharing with friends and family. (You can also vote at the info desk at Tauranga Crossing, which counts for 2 votes.) The most community votes wins!

### PTA

Next PTA meeting Thu 7 Aug at 7 pm

### THE CHAT CONTINUES (PARENTS OF TWEENS & TEENS)

Tue 22 Jul at 7 pm in the BC Staffroom. Have you signed up yet? It's free! Registration: <https://forms.gle/EYmAzeegSrBHfpxv9>. 'The Chat Continues' is for parents of tweens and teens and will equip you to have those awkward but vital conversations about sex, puberty, dating, consent, porn, sexting and much more. THE CHAT is led by Christy Herselman <https://thechat.co.za/>.

### GRANDPARENTS MORNING TEA 27 AUG

BC would like to cordially invite our grandparents (and honorary grandparents) to join us to celebrate and honour your treasured role in the life of our students at BC. You are welcome to attend any part of the morning programme. Register [here](#).

### UNIFORM SHOP

Please note that the Uniform Shop will be **closed over the school holidays** from **Mon 30 June** and will **reopen on Mon 14 July**. To assist families preparing for Term 3, the shop will also be **open on Tue 15 July**, from **10am to 4pm**. We appreciate your patience as we work to replenish winter stock in the new uniform range. Families who placed orders during Term 2 will be contacted directly once their items are ready. We aim for the shop to be fully stocked for the start of Term 3.

### SCHOOL BOARD ELECTIONS

Board elections are coming up in September, with more information to come. As we prepare our Electoral Roll, please could you take a moment to confirm that your contact details are up to date on SchoolBridge. The main roll will close on Wed 16 July.

### END OF DAY PICK UPS

A growing number of drivers have been parking on the yellow lines at the school end of Elder lane causing congestion as school buses enter through the gates and other motorists entering the pick-up zone. We encourage all drivers to follow the road rules which mean NO parking on the footpaths or yellow lines. Next term parking wardens from the TCC are planning on doing random monitoring of the parking, which may result in parking infringement notices being given.



**SCHOOL HOLIDAY HOCKEY PROGRAMS**  
Tauranga Hockey Association | July 2025

**Holiday Program**  
Dates: 30 June, 1 July, 7 July & 8 July  
Time: 9:00am – 12:00pm  
Years: 1-8  
Focus: Skills, teamwork & fun!

**Hockey 5s**  
Dates: 3 July, 4 July & 10 July  
– 3 & 10 July: Years 9-8  
– 4 July: Years 7-10  
Time: 9:00am – 3:00pm

Format: 5-a-side. Players register individually and can name up to two friends they'd like to be placed with. Teams will be balanced by organisers to ensure fair, competitive matchups.

Pricing (applies to both programs):  
• 1 day – \$50 (base fee)  
• 2 days – \$90 total (\$50 + \$40 add-on)  
• 3 days – \$130 total (\$50 + \$80 add-on)  
• 4 days – \$165 total (Holiday Program only)  
Choose the days that suit you best when registering.

To register, visit the Tauranga Hockey website and click on the "Community Programmes" tab.  
All sessions are held at the Tauranga Hockey Centre.  
Questions? Get in touch with Lachie at [officiating@tauhockey.co.nz](mailto:officiating@tauhockey.co.nz) for more info.

**GRAPPLING HQ**  
**TEENS CLASSES**

**JIU JITSU**  
**FREE MONTH** STARTS JULY 14<sup>th</sup>

Kickstart your martial arts training with a full free month of training!  
• Self defence • Confidence • Fitness • Discipline • Resilience

**TUESDAY & THURSDAY 4-30PM TO 5-15PM**

CONTACT US

**SCHOOL HOLIDAY BASKETBALL CAMP**  
WHAT HQ, 105 BIRCH AVENUE, TAURANGA  
9.00AM TO 3.00PM

**CAMP 1 MON 30 JUN - THURS 3 JUL**  
**CAMP 2 MON 7 - WED 9 JUL**  
**CAMP 3 THURS 10 JUL**  
GROW HER GAME - GIRL'S ONLY DAY

**3 OR MORE DAYS: 10% DISCOUNT**

**10% FAMILY DISCOUNT**  
\$50 per day

**WHAT HQ**