



HEAD OF SCHOOL LETTER TERM 3 WEEK 4

Kia ora wonderful BC Chapman waka whānau,

Romans 8:5-6

"For those who live according to the flesh set their minds on the things of the flesh, but those who live according to the Spirit set their minds on the things of the Spirit. For to set the mind on the flesh is death, but to set the mind on the Spirit is life and peace."

Rōma 8:5-6

"Ko te hunga hoki i runga i tā te kikokiko, whakaaro ana rātou ki ō te kikokiko; ko te hunga ia i runga i tā te Wairua, ki ō te Wairua. Ko tō te kikokiko whakaaro hoki he mate, ko tō te Wairua ia he ora, he rangimārie."

Romans 8:7-9

"For the mind that is set on the flesh is hostile to God, for it does not submit to God's law; indeed, it cannot. Those who are in the flesh cannot please God. You, however, are not in the flesh but in the Spirit, if in fact the Spirit of God dwells in you. Anyone who does not have the Spirit of Christ does not belong to him."

Rōma 8:7-9

"He tikanga whawhai hoki ki te Atua te whakaaro ki te kikokiko e kore nei hoki e ngāwari ki te ture a te Atua, kāhore anō e āhei kia ngāwari; ā, e kore e taea e te hunga i te kikokiko te whakamānawareka ki te Atua. Otiia, kāhore koutou i te kikokiko, engari, i te Wairua, ki te mea e noho ana te Wairua o te Atua i roto i a koutou. Ki te kāhore ia te Wairua o te Karaiti i tētahi, ehara tēnei i a ia."

What a splendid Winter weekend we have just enjoyed with those cloudless blue skies & enough sunshine & wind to dry the washing! Perfect! Last week I raced to the Supermarket to pick up pegs that Whaea Surette urgently needed for her Teaching & Learning Programme in Ruma ono. While waiting at the 'Check Out', I looked straight ahead at the huge windows which a window cleaner was conscientiously working on. He was extremely skilled, had a systematic structure he was following, & in seconds the windows were literally being transformed in front of my eyes. They were clean & the view was unhindered by dirt in any form! It got me thinking to my glasses which I need for reading & working on the computer & how Whaea Lisa bought me cleaner to remove the inevitable marks that distort or interfere with my vision.

From there I thought about the lens through which we view life, & how readily it can get marred, tainted, skewed with a challenge we are facing, a negative experience, pressure, a social concern, or a devastating national or world event. I don't know about you, but I admit my perspective can rapidly change & my ability to see with the lens of faith/whakaponono, hope/tumanako & love/aroha disappears. Cleaning the lens, & recognising the Truth of the goodness of character of God & His Word, the Bible, clears the lens & brings such a different perspective to my mind & heart. About now, my husband Jeremy would say, "Hazel, the guy was just cleaning the windows!"

On the way out, I paused to thank the window cleaner for the magnificent job he was doing. I thanked God for someone who had challenged me to keep my lens centred on Jesus who offers me a completely different way of seeing & doing life, one which freely offers faith, hope & love.

Me te aroha tonu
With love always

Hazel



YEAR 7 & 8 INQUIRY PROJECT COMMON GRACE

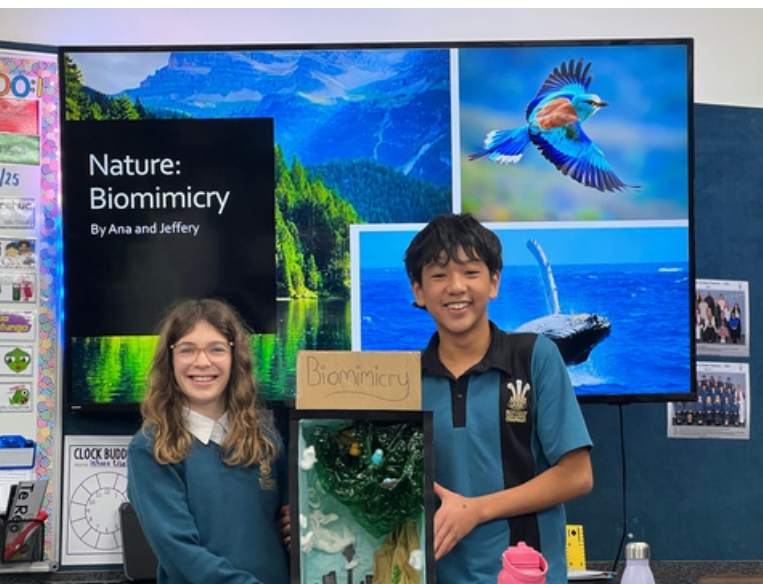
Our rangatahi elected to research & present a range of different topics relating to 'Common Grace', which is a concept that helps us understand how God shows kindness to everyone, whether they believe in Him or not. Imagine you're sitting in a classroom, and your teacher hands out delicious cookies to everyone, not just to those who did their homework or behaved well. That's a bit like common grace! It's about God providing blessings and good things to everyone, regardless of how they act or what they believe.

Our rangatahi presented their research findings in extremely creative ways & the photos we have included give just a small glimpse into the quality of the learning content & the accompanying visual Power-point, Models, or Poster presentations. In Whaea Lisa's words, the learning content, oral delivery & visual presentations were outstanding, deservedly attaining the highest grades! Way to go Ruma rima rangatahi!



Here are a few examples of common grace:

- 1. Nature:** Think about a sunny day. The sunshine and rain help both plants and people to grow and thrive. It doesn't matter who you are; everyone gets to enjoy the beauty of nature.
- 2. Talents and Abilities:** People have different talents, like being good at music, art, sports, or problem-solving. These abilities are gifts from God that help us enjoy life and help others, no matter who we are.
- 3. Kindness and Goodness:** You might notice people acting kindly, like helping others, sharing, or being polite. This goodness reflects God's nature in everyone, showing that He cares for all people.
- 4. Rules and Order:** Imagine roads without traffic lights. Yikes! Order and rules, like traffic lights, help keep everyone safe. **These systems are part of God's grace, making life more organized and safer for everyone.**





Common grace reminds us that God is loving and kind to all people. It encourages us to appreciate the world around us and be thankful for the good things in life. It also inspires us to be kind to others, just as God is kind to us. Overall, common grace is about understanding God's love and kindness to everyone, everywhere – like when everyone gets cookies in the classroom!

BC HEAD STUDENTS – HUMBLE APOLOGIES

Our most humble apologies for the reporting error in our last newsletter as we got the 'Heads' and 'Deputies' mixed up. They are Ezra Vukona – Head Boy, Grace Winata – Head Girl, Asher Lambert – Deputy Head Boy and Alexia Le Roux – Deputy Head Girl.



SCIENCE

Who would have imagined that making Sherbert could sit so conveniently beneath the banner of a Chemistry experiment? There was 100 % focus on the end goal & 100% engagement in the chemical process involved as these photos show.

Acids & Bases



SCIENCE ROADSHOW

The Science Roadshow held at Rotorua Intermediate on Tuesday 5th August was a highlight for our Year 5 -8 rangatahi. The theme was Planet Earth & this included Fossil Fuels, Air Pressure & other related topics. The opportunity for 'hands on' learning is not only engaging but also incredibly varied in the coverage of a broad array of Science concepts, principles & practices. The kaiako/teachers who travel around with the Science Roadshow are adept at drawing in and holding audience attention while articulating learning content in memorable ways. The enthusiastic response when asked what they thought of the Science Roadshow & explanation of what they learned proved that this is an event to ensure we attend.



\$20 STEWARDSHIP CHALLENGE

**BIRTHDAY PARTY ENTERTAINMENT
FOR KIDS AGED 3 TO 10 YEARS OLD**



Ana and Matilda - The Twister Sisters -
will bring fun to your birthday party
with balloon twisting and games.

Call Sarah on 022 350 2579

LET'S GET THIS PARTY STARTED!

Our rangatahi from Ruma rima have received their \$20 & are now engaging in the challenge of multiplying it through creative entrepreneurial ideas. You might see some flyers such as this one created by the 'Twister Sisters' Ana & Matilda Moffatt. We are thrilled to see the commitment to take what is their hand and increase this for the benefit of others here in Rotorua, in our Nation & to an organisation within the wider world. All the money raised will be returned to our kura later in Term 4 & these rangatahi will decide where each third will go to.



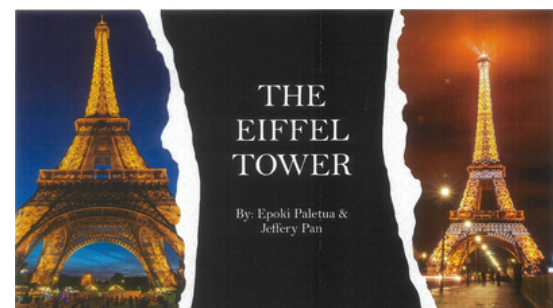
FRENCH

Our rangatahi have also recently completed and presented their learning about French Culture which included places of significance, tourist destinations & French cuisine which tantalised our tastebuds.

Jeffery Pan & 'Epoki Paletu' shared their research on the **Eiffel Tower** & its historical journey, significance & present day attraction. They included information from design, to construction, the initial rejection by the people of Paris through to the world wide accolade it currently draws for tourists across the globe.

Taliah Christiansen & Hosanna Santhosh, created a tour to the **six most famous tourist attractions in Paris** providing the audience with interesting facts & increasing the desire to visit such sites. Finally, **Isobella Parker** shared **six different French Dinners & Desserts** which definitely left us with mouth-watering memories & provided incentive to work through the recipe steps at home.

Having now been exposed to this learning, we are keen to book ourselves on an OE to France to investigate first-hand what is offered there. C'est magnifique!



CAR PARK CARE



Can we please ask you to drive slowly & park in the carpark when either 'Dropping Off' or 'Picking Up' your son/daughter/children. Once parked, can you please walk them safely to the cones before school or to your car after school. We would also ask that the field is **not parked on** as the ground is soft & it gets easily ploughed up. Our commitment is for the health & safety of all. We appreciate everyone who helps to take care of our young people.

UNIFORM

Do you have any tidy BC Chapman uniform items that are surplus to requirements? Please drop your donation into the school office. We are particularly looking for smaller sizes, especially jerseys.

If you are needing boys socks, new stock has just come in to the Uniform Shop which is open on Tuesdays during Term time.



WHĀNAU PRAYER

Every Tuesday morning at 8am during Term time, parents and caregivers gather to pray for BC Chapman. We place great importance on prayer so please come and join us, even if you can only make it for 10 minutes or so.

FOOTBALL TROPHIES

In preparation for our House Football Tournament on Friday 12th September (postponement Friday 19th September) please return the football trophies that were won last year. You know the ones, the **Golden Glove**, the **Golden Ball** and the **Golden Boot**. Thank you in advance.



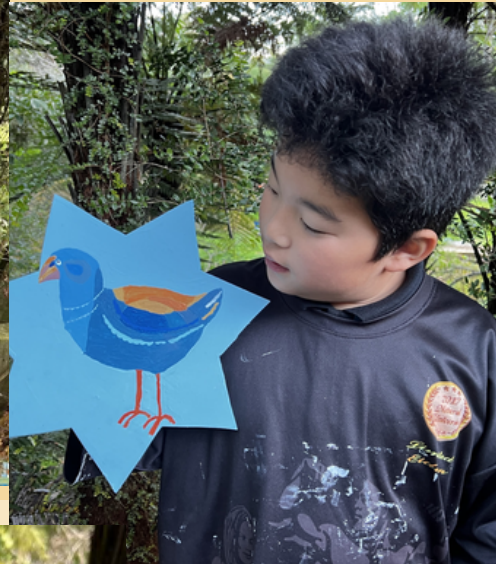
AFTER SCHOOL ART CLASSES

Beginners After School Art Classes with Janet Keen in Rotorua enrolling NOW for the remainder of Term 3 and 4 and 2026: Drawing, Painting, Mosaics.

Tuesdays, Wednesdays and Thursdays 3.30pm to 4.30pm and 4.35pm to 5.35pm

Small classes, friendly, safe, quiet, organic environment. From age 6 and upwards.

Enquiries welcome: Phone 027 351 3887 or email janet@jkeen.net



Arotahi Magazine

Copies: The Arotahi is a yearbook produced by the Visual Arts Department and distributed at the end of each year. **One free yearbook is given to each family** - either to the departing senior OR the youngest child, as well as a pdf version of the magazine available to download for free. For those families wishing to order additional copies, these can be purchased for \$20 per copy (on charged to school account). Order [here](#).

Advertising: The Arotahi yearbook is a treasured publication that is poured over by students for years to come. Distributed to over 1,300 Bay of Plenty families, this is great opportunity to promote your business and support BC. Based on full colour, A4 sizing prices are ¼ page \$300, ½ page \$500, Full Page \$800 and Inside Back Cover \$1,000. Booking deadline Fri 29 Aug and artwork due Fri 12 Sep. Please email Shawna Murray to secure your spot.



SCHOOL BOARD ELECTIONS

School Board Elections

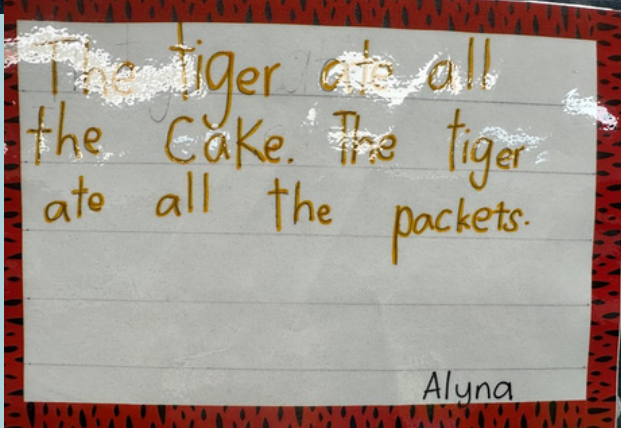
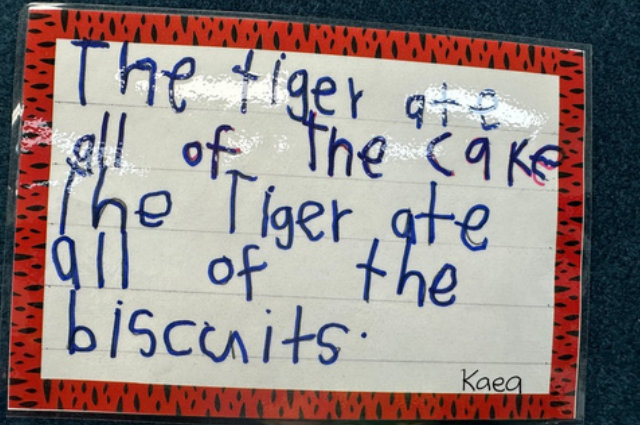
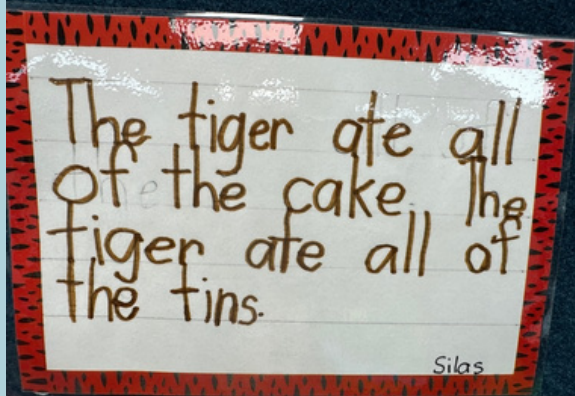
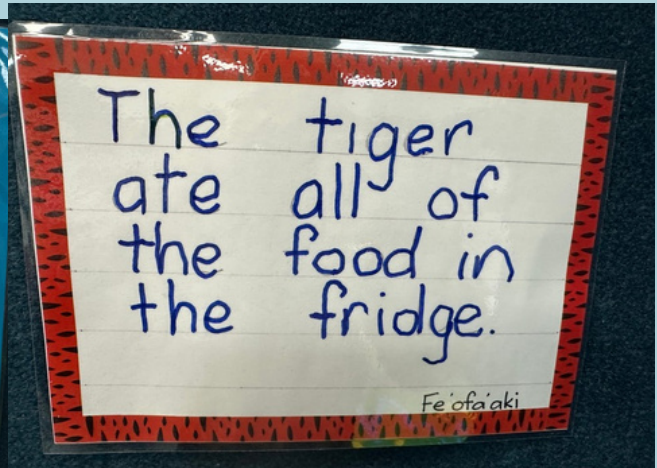
This is an exciting time for Bethlehem College as we elect five individuals to serve on the Board of Trustees to guide the direction of Bethlehem College and our Primary, Secondary and Chapman schools. This year we have 19 candidates standing for election. You can read their candidate statements [here](#).

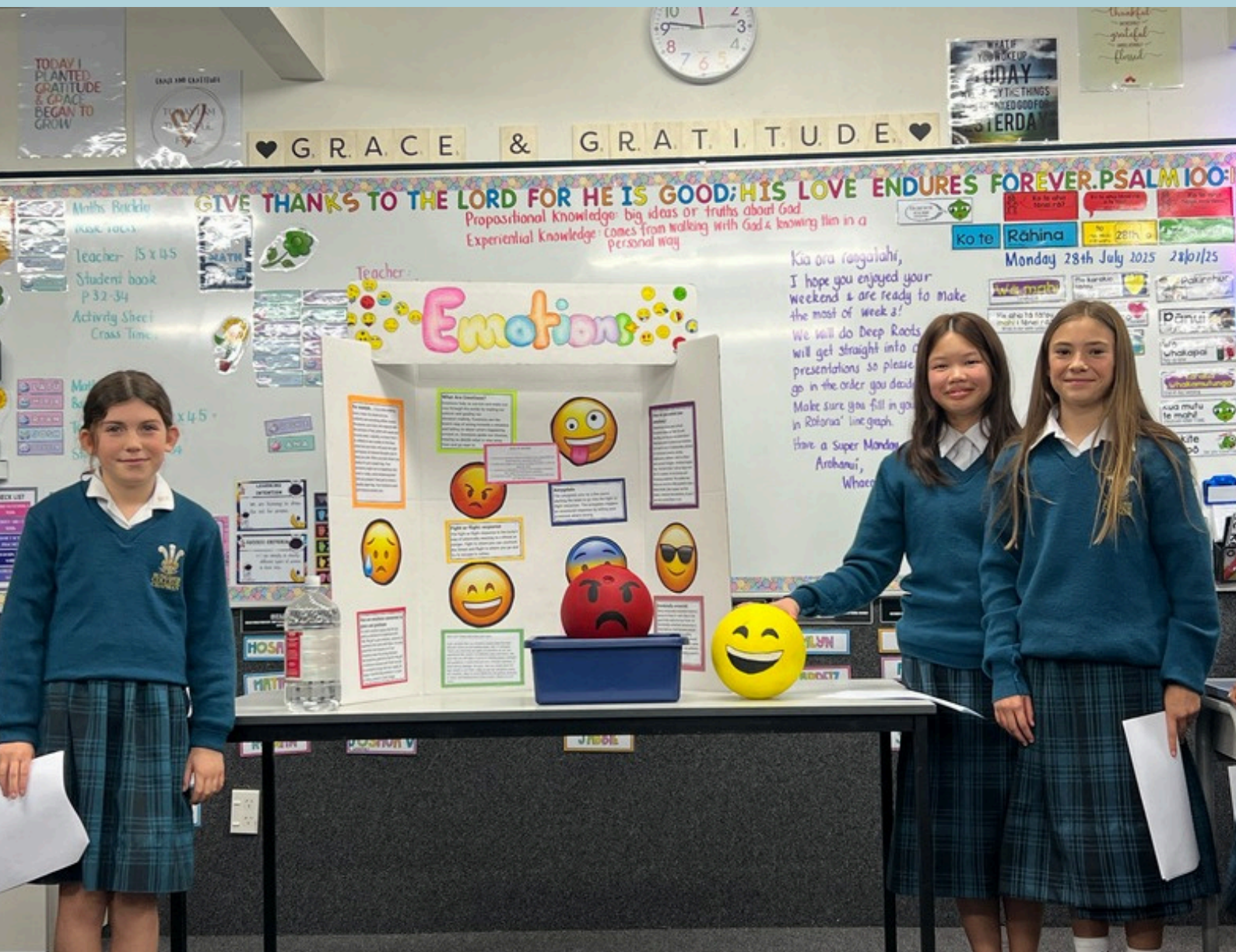
Please join us this Tue 12th August at 6 pm in the BC Tga Staffroom for an informal 'Coffee with the Candidates' to find out more about how they would like to serve Bethlehem College. You should receive your voting papers in the next 7-10 days. Please prayerfully consider each candidate and the skills and values that they will bring to our school.

ART EXHIBITION

Without a doubt the Art generated by our tamariki is uplifting & showcases not only their talent but also their creativity. Irrespective of the motivation used or the skills taught, the end result is completely unique. It brings to life our classroom, corridor & foyer displays.

Our Art this week comes from our amazing Ruma wha artists who have been enjoying 'The Tiger Who Came to Tea' by Judith Kerr. You might like to invite one of these fine characters to your place. There is a caution, however, as these visitors are known to eat everything your fridge & pantry hold without asking, & replenishing the groceries will be expensive!!





UP & COMING DATES

Tuesdays – Whānau prayer at BC Chapman every Tuesday 8am to 8:30am.

Wednesday 20th August Chapman PTA 'Waka Tautoko' Meeting

(Christiansen's house, 22 Kowhai Street, Glenholme 6:30pm to 8pm)

Thursday 21st August Speech Final Living Well Church Auditorium - 6.30pm sharp

Friday 29th August Book Character Day

Friday 5th September Blokes' n Kids Breakfast Friday 5th September 7am-8.15am
Café Living Well Church

Friday 12th September House Football Tournament (postponement Friday 19th September)

Thursday 18th September Final Immunisation Year 8

Friday 19th September – last day Term 3

Monday 6th October – Staff only day

Monday 6th October Uniform Shop open 10am to 3pm (change to summer uniforms)

Tuesday 7th October First day of Term Four

'ECB Cleaning & Gardening Services

Contact Elise:
0220706538

References
Available.
Competitive
Rates.



Foster Families Urgently Needed



Do you want to make a real difference in the life of a child?

We are looking for caring Christian people who are willing to open up their heart and home to care for a child or young person.

A weekend, a week, or sometimes longer.

Find out more about this exciting ministry
YOU CAN MAKE A DIFFERENCE

For an application pack or further details, please contact:
our Foster Parent Recruiter, Venetia Ryan
027 263 4549 or Venetia.Ryan@ohf.org.nz



www.ohf.org.nz

A Christian Community Response

W.ild

**W.ILD CONTRACTING
SERVICES – WAYNE
GOODCHILD.**

From stacking your firewood or water-blasting the deck to creating beautiful wood turned gifts or restoring that antique tool you got from your grandpa, W.ild can help you out.
Ph 027 332 2961

www.facebook.com/Wild-Contracting-Services

BCC WHANAU BUSINESSES

Please get in touch if you'd like
your business included

**CANTON
RESTAURANT AND
TAKEAWAYS**

**WESTEND SHOPPING
CENTRE, Malfroy Rd.
PH 07-347 8359**



DAVE & STACEY LONGBOTTOM. House wiring, electrical installations, and maintenance.

www.longbottomelectrical.co.nz

Kara
NILES

Your local real estate salesperson!
For results that move you email OR call

Kara: 021 025 97042
Kara@isellproperty.co.nz



iSellProperty.co.nz



JUNIPER

49A LAKE ROAD, OHINEMUTU, ROTORUA

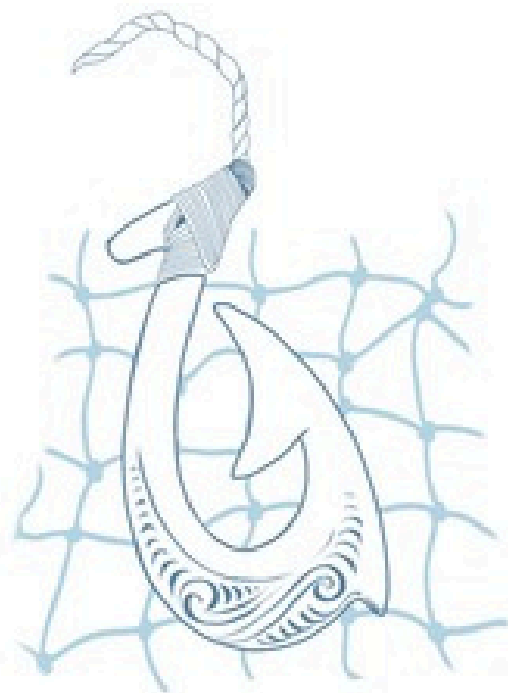


**INDOOR PLANTS, ART
+ BEAUTIFUL THINGS**

f **@**
[@juniper.store](https://www.instagram.com/juniper.store)

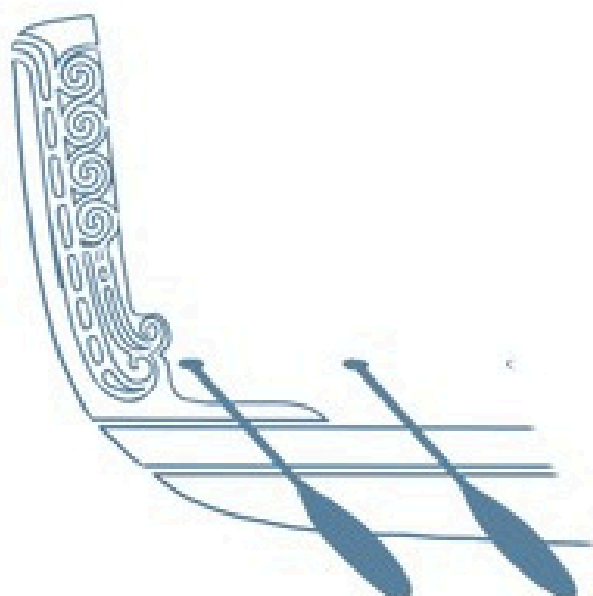
hello@juniperstore.co.nz

10-5 TUES-FRI
10-2 SAT



I H U

JESUS CHRIST



K A R A I T I

