



BC PRIMARY NEWSLETTER

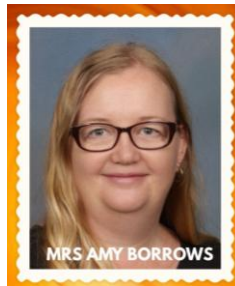


TERM 2 2026 – NEWSLETTER #5

Kia ora koutou BCP whānau,

With the change of season in the air and autumn colours appearing in the trees, I warmly welcome you all to Term 2. A special welcome goes to our new students and families who have recently joined Bethlehem College Primary. We are also delighted to welcome our new Year 0 teacher, Mrs Liezl Venter, who brings considerable experience. We trust that you will quickly feel a strong sense of love and belonging within our school community.

It is with both excitement and sadness that I share the resignation of Mrs Amy Borrows, who will be leaving BCP at the end of Week 4, after 12 years of service as our primary music teacher. Amy and her husband, Grant, have accepted positions as missionaries with the Ruel Foundation in Sorsogon, Philippines. Their work will involve a wide range of responsibilities, including overseeing an orphanage, managing staff, and liaising with government departments.



MRS AMY BORROWS

We are deeply grateful for Amy's contribution to BCP over the years, particularly her involvement in musical groups such as the choir, talent showcases, and school productions. While we are sad to see her go, we are also excited to see what God has in store for Amy and Grant as they step out in faith, trusting in His provision, guidance, and grace. Please keep them in your prayers, as we do, and join us in asking God to surround them with a strong support network as they serve others and experience His goodness.

We are pleased to welcome Mrs Rachel Williams back to BCP from maternity leave on a part-time basis. She will take on the primary music role through to the end of 2026. Mrs Williams is well known to our students and community and will provide a smooth and reassuring transition.



MRS RACHEL WILLIAMS



TERM 2 KEY DATES

PHOTOLIFE CULTURAL PHOTOS

Tues 12th May & Wed 13th May

EPROB COMPETITION

Thurs 14th May – BC

YO-Y6 CROSS COUNTRY

Mon 18th May – BC

EPROB COMPETITION

Wed 3rd Jun – Details tbc

BOOK WEEK

Tues 9th -Fri 12th Jun – BC

Y5&Y6 WBOP CROSS COUNTRY

Tues 16th Jun – Waipuna park

Y4-Y6 SHOWCASE

Fri 26th Jun – Details TBC

Y5&Y6 BOP CROSS COUNTRY

Tues 30th Jun – Opotiki

PARENT TEACHER CONFERENCES – NO SCHOOL

Thurs 2nd Jul

Our Vision
To be a Christian learning
community of excellence where
lives are transformed.

Facebook: [@bethlehemcollege](#)
Instagram: [@bethlehemcollege_nz](#)
Website: [Enrolled Families](#)



We are a community of faith...



...with purpose, love and aratitude.

Our 2026 theme, 'A community of faith, with purpose, love, and gratitude,' continues to guide us as we consider how best to serve our community. Prayer remains central to all we do, and we recognise the importance of strong connections between families. To support this, we encourage the role of 'community builders' within each class. If there are families in need due to illness or challenging circumstances, or if you are new to our community, please contact Mrs Karryn Greenway in the primary office so we can consider how best to offer support.

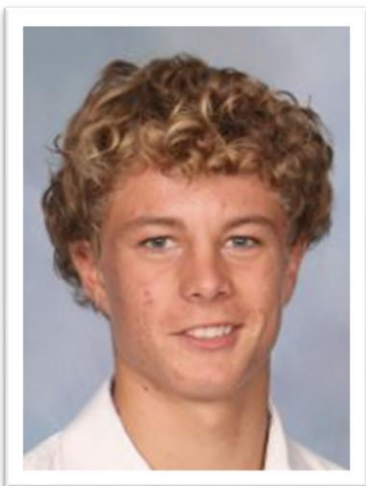
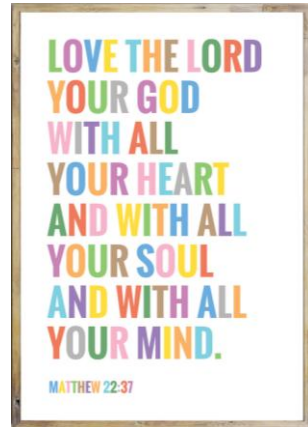
As we begin Term 2, my prayer is that our students continue to see the love of Jesus Christ in action and feel seen, known, and valued within their classrooms and across our school.

WORSHIP ASSEMBLIES

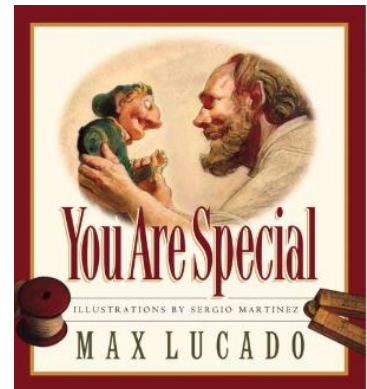


At our final worship assembly for Term 1, Mrs Lee focused on Holy Week and the significance of Good Friday, when Jesus died on the cross and rose again on the third day. We were reminded that Jesus died for each of us so that we could be in a relationship with God. As we brought our term Bible verses on friendship to a close, we were encouraged to remember that Jesus is the greatest friend we could ever have.

"Love the Lord your God with all your heart and with all your soul and with all your mind." Matthew 22:37



Worship assembly last week saw our Deputy Head Boy, Isaac Reid lead devotion. He talked to us about how God makes each of us special, using the book "You are special" by Max Lucado. He reminded us that each of us are special to God just the way we are.



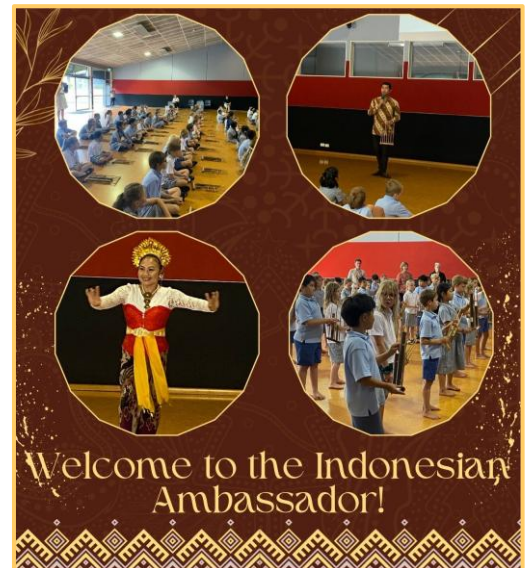
ASSEMBLY

C3 and C4 were fabulous hosts of our assembly today with Micah Shakes and Aiden Venter leading well. C4 shared the nursery rhyme Humpty Dumpty and provided some wonderfully creative thoughts explaining who was responsible for the incident. C4 have been learning about islands in the Pacific and children shared some of their most interesting learnings and artwork. It was encouraging to see every student from these classes have the opportunity to take part.



WHAT'S HAPPENING IN OUR SCHOOL

In the last week of term 1, we welcomed the Indonesian ambassador to New Zealand to BCP. Year 4 and 5 classes had the privilege of learning how to play the angklung, a traditional Indonesian instrument. It is quite something when 84 students play Pokarekare ana together!



ANZAC ASSEMBLY

BCP shared in a special ANZAC assembly last Friday where we remembered the brave men and woman from Australia and New Zealand who went to war to protect others, showing incredible courage. Mr Crump played the last post on the trumpet while we stood in silence. ANZAC reminds us of another very important sacrifice. Just like soldiers cared deeply for others, Jesus cared for all people and showed this by choosing to die for our sins on the cross.



"Lest we Forget" - we choose to remember the sacrifices made, so we can live in peace.



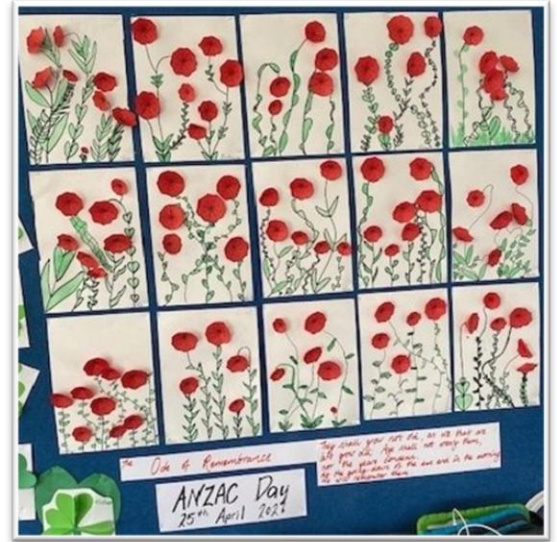
Y6 WATER CYCLE ROTATIONS

Year 6 students are learning about the water cycle, including the different stages and how water moves through our environment. Here, we show students exploring how humans can use technology to interact with the water cycle, by working together to design and build dams that control water flow. This hands-on learning helped students connect scientific ideas to real-world problem solving and teamwork.





AUTUMN LEAVES FUN!



D4 ANZAC ART

CONGRATULATIONS!



PRIMARY SPORT

Congratulations to all of our swimmers - Ella Baker, Samuel Hardman, Elina Kim, Piper Urquhart and Matthew van Tonder who competed and represented the North Cluster at the WBOP Swimming Championships.

A special mention to Ella Baker who is Year 6 Girls overall winner and makes her the top year 6 girls' swimmer in the WBOP region congratulations!!



PRIMARY CROSS COUNTRY

Monday 18th May (Postponement date – Monday 25th May)
9.30am – 10.20am - Phase 1 (Y0 - Y3)
11am - 12.15pm - Phase 2 (Y4 - Y6)

Don't forget to mark your diaries to attend our annual Primary Cross Country, please feel free to invite family and friends for a great morning out!

Please see schedule below:



Phase 1 (Estimated Times)			Phase 2 (Estimated Times)		
9.30 - Move to field			11.00 - Move to field		
9.35 - Welcome (Jo West)			11.10 - Welcome (Jo West)		
Event	Warm up	Start of Race	Event	Warm up	Start of Race
Preschool	9.40	9.42	Year 4 Boys	11.15	11.17
Year 0/1 Boys	9.45	9.47	Year 4 Girls	11.20	11.22
Year 0/1 Girls	9.50	9.52	Year 5 Boys	11.25	11.27
Year 2 Boys	9.55	9.57	Year 5 Girls	11.30	11.32
Year 2 Girls	10.00	10.02	Year 6 Boys	11.40	11.42
Year 3 Boys	10.05	10.07	Year 6 Girls	11.50	11.52
Year 3 Girls	10.10	10.12	Finish 12.15 (Approximately)		
Finish 10.20 (Approximately)					



FRIENDLY REMINDERS

Please ensure that the correct winter uniform is worn. <https://www.beth.school.nz//uniforms>

With the unpredictable weather at this time of year it is important for children to have raincoats. Raincoats can be any colour and are encouraged over umbrellas.

We would encourage you to check the names on your child's uniform. We have many items that go missing each week and it may be that children are taking other children's uniforms home by mistake. Thank you for your assistance.

HAPPY PARENTING

Life is busy and at times parenting can sometimes feel overwhelming, especially when there can be a tendency to self-doubt. The attached article highlights the importance of parenting with *mana*—a sense of confidence, authority, and inner strength that allows us to be both warm and firm, flexible yet grounded. When parents trust themselves, accept imperfection, and stay connected to supportive relationships, they create a secure environment where children can thrive. Ultimately, it's less about perfect techniques and more about who we are as parents; by nurturing our own wellbeing and recognising our inherent worth, we model *mana* for our tamariki, helping them to grow in confidence and identity as well.

<https://parentingplace.nz/resources/parenting-with-mana-youve-got-this>

Ngā mihi,

Jo



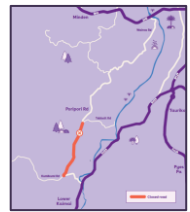
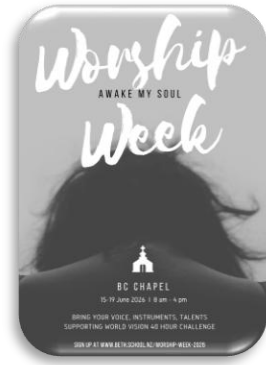
“ MANA ALLOWS US TO BE BOTH CLOSE AND STRONG, WARM AND STRUCTURED, IN THE LEAD AND FLEXIBLE.


“ THERE IS SOMETHING ABOUT THE WORD THAT INVITES ME TO SEE MYSELF AS A PERSON OF DIGNITY, STRENGTH AND WORTH.



NOTICES

- Worship Week:** Join us for the fourth annual [Worship Week](#) at the BC Chapel **15-19 June** from 8 am to 4 pm daily. Be our guest or sign up [here](#) to perform with instruments, singing, reading, dancing, drama, art and more. Visit World Vision to find out more about the [40 Hour Challenge](#) and sign up for the BC Team.
- Enrolment:** Applications for students entering Year 7 and 9 in 2027 (not currently attending BC) close on 30 June. Online application [here](#).
- BC Businesses:** Need a referral for a business? Have a business you'd like to list? Want to connect with other businesses? Check out our BC Business page [here](#).
- RightNow Media:** As part of the BC community, you have a membership to RightNow Media. Whether you're looking for encouragement in marriage, practical parenting wisdom, spiritual growth resources, or safe Biblical content for your children, this library is here for you. Our hope is that this resource strengthens your faith, encourages your family, and supports you as you lead your home. Sign up for free today: <https://app.righnowmedia.org/join/bethstudents>.
- Road Closure: Poripori Road** will be closed between Kumikumi Road and Tebbutt Road for approximately eight weeks, from **11 May to 3 July** (weather dependent). There will be no through access during this period. A detour will be available via State Highway 29 and State Highway 2.
- Rob Cope:** Join us Wed 20 May from 4.30-6 pm to learn specific tools/techniques to empower our kids to make good decisions online. At least one parent from each family is requested to attend one of the four 2026 events. Tickets are \$5 at www.eventfinda.co.nz.





PARENTING ONLINE

**WED 20 MAY
4.30-6 PM**

Bethlehem College
Performing Arts Centre

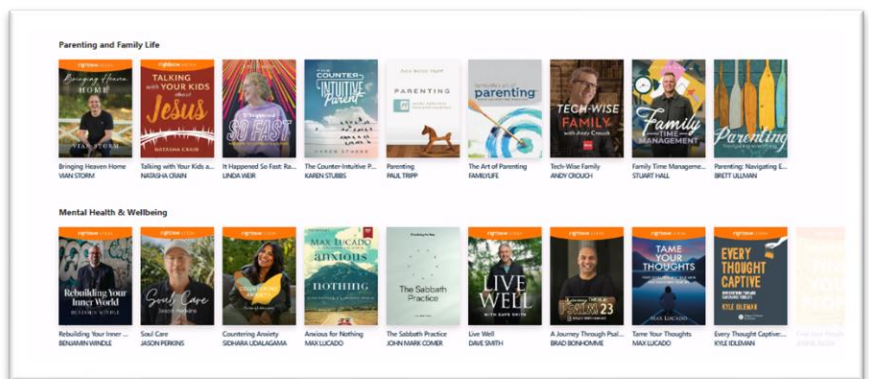
Tickets \$5 at eventfinda.co.nz

Video

ROB COPE

LECTURER

MUST SEE highlighting ins & outs of kids online and navigating together as a community



CHILDREN'S CROSS COUNTRY TRAINING

Term 2

- Mondays at Waipuna, 4-5pm
- Wednesdays at Fergusson Park, 4-5pm



All children 7 yrs and older welcome (don't have to be a member of Bellevue)

For more info, contact Malcolm Taylor on 027 292 4411 or janmal@xtra.co.nz

In the **Bay of Plenty**
there is an **urgent need:**

Do you have Room in your Home for One More?

- Short breaks care
- Emergency care
- Short and long term care
- Permanency (Home for Life)
- Care for high needs and disability
- Planned short breaks care for a family who has a child with a disability

We invite you to join us on the journey and look forward to walking together in the days to come.

If you would like to start a conversation about how you could get involved with Open Home Foundation, please contact Bridgette Munro, Foster Parent Recruiter on 021 486 722 or email Bridgette.Munro@ohf.org.nz

www.ohf.org.nz

A Christian Community Response

OPEN HOME FOUNDATION
TE WHARE KALIPAPA AWHINA

